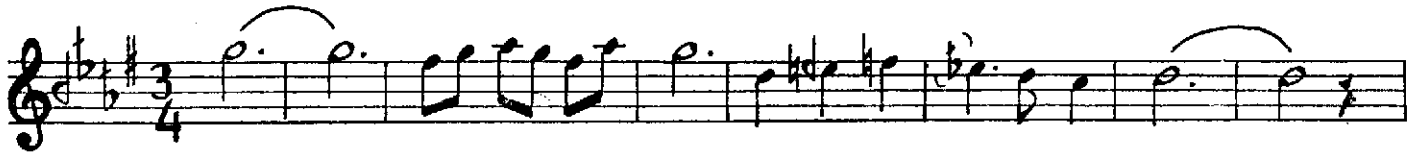


H İ C A Z K Â R Ş A R K I

Gönlümün pembe çiçeği

Güfte ve Beste
NEVESER KÖKTES

SEMÂİ



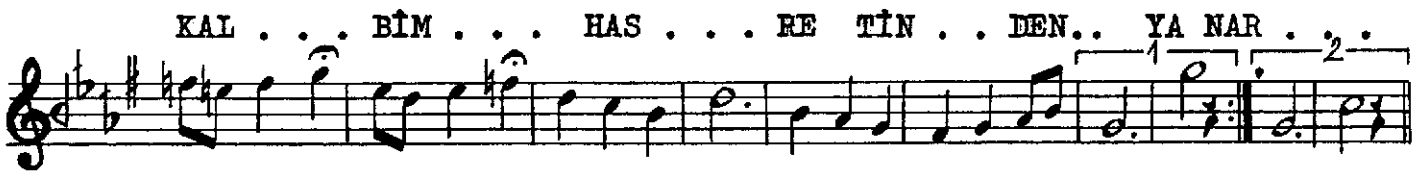
ARANAĞME . . .



GÖN LÜ . . MÜN . . . PEM BE . . Çİ .. ÇE Ğİ . . . Dİ



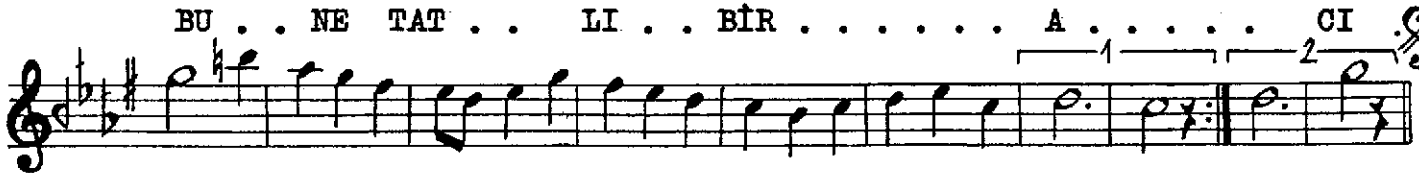
LE . . MEZ.. Mİ SİN . . BE.. Nİ GÖR.. ME Yİ —SAZ— Yİ . . .



KAL . . . BİM . . . HAS . . . RE TİN . . DEN.. YA NAR . . .



HA . . . YA . . . Lİ . . . Nİ SE . . VER..SA RAR (SAZ)RAR(SAZ)



BU . . NE TAT . . LI . . BİR A CI



SEN .. SİN . . GÖN . . LÜ . . MÜN . . TÂ . . CI (SAZ) CI (SAZ)

GÖNLÜMÜN PEMBE ÇİÇEĞİ
DİLEMEZ MİSİN BENİ GÖRMEYİ
KALBİM HASRETİNDEN YANAR
HAYÂLİNİ SEVER, SARAR

BU NE TATLI BİR ACI
SENSİN GÖNLÜMÜN TÂÇI
KALBİM HASRETİNDEN YANAR
HAYÂLİNİ SEVER, SARAR